


SAVING ART-NET OR sACN SCENES TO SD CARD

The Ethernet interface can play an Art-Net or sACN show in Stand Alone mode. The show is saved on the SD card and will control up to 8 universes maximum per interface. All triggers work in these modes. When the interface is in SA mode, the F3 function allows activation of the Art-Net or sACN mode.

NOTE: Once in Art-Net (Ar) or sACN (AC) Stand Alone mode, the interface will no longer be visible on the network. In Art-Net mode, the interface will use Broadcast to play the show over the network. In sACN mode, the interface will use Multicast to play the show over the network.

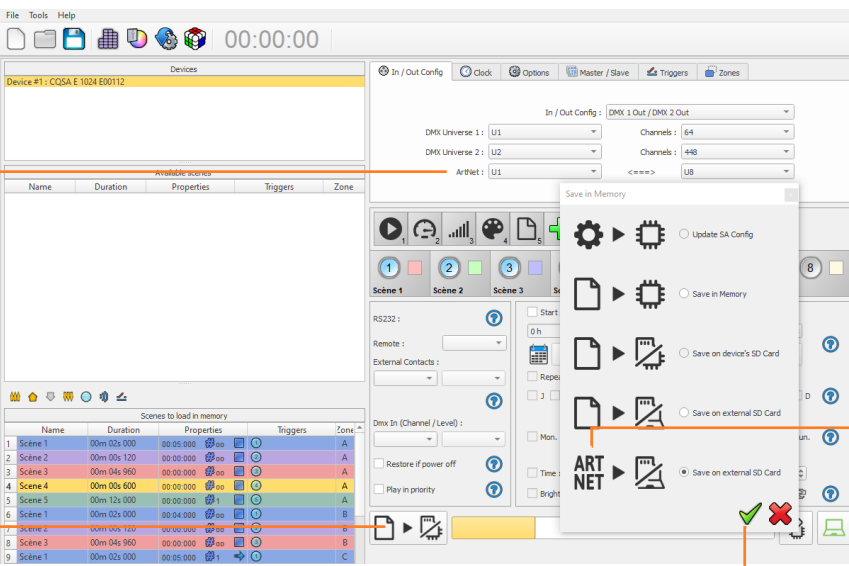
IMPORTANT: It is necessary to connect the interface to the Ethernet network *BEFORE* powering ON in order to properly start the ArtNet or sACN mode. Otherwise, it is necessary to restart the interface with one of the following 3 methods: Restart (disconnect and reconnect the DC power supply); or, Reset (eject and re-insert the SD card); or, Reselect the ArtNet mode (Ar) or sACN (AC) mode in the advanced F3 menu of the interface (Press  to confirm the selected mode. The interface will immediately reboot to activate the new mode).

Saving to SD Card in Player and Pro software

Create a show as you would for a normal show and go to Stand Alone mode

Art-Net and sACN shows can extend up to 8 universes per microSD card and per interface. It is necessary to define the range of desired universes.

In the In / Out Config tab, choose the starting universe and the ending universe (for example, from universe 1 to 8 for the first 8 universes). Then click on the Save in Memory button and select Art-Net Save on External SD Card.



Select universe range

Save in memory

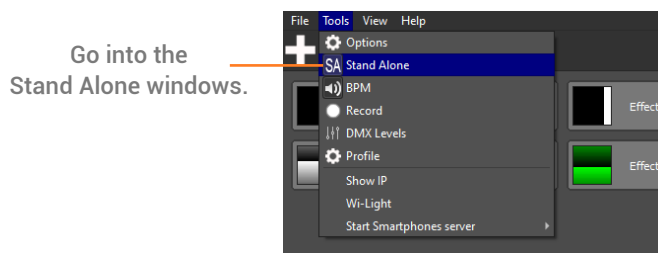
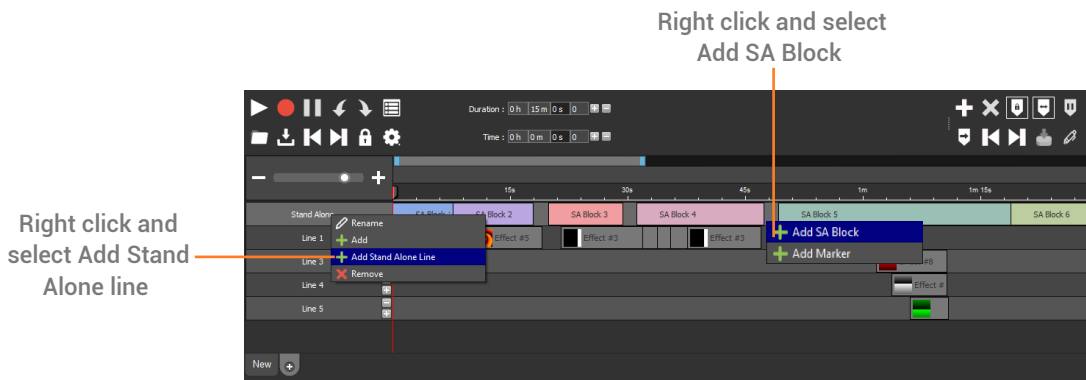
Art-Net Save on External SD Card

Confirm

Name	Duration	Properties	Triggers	Zone
1 Scene 1	00m 02s 000	00:00:00	so	A
2 Scene 2	00m 00s 120	00:00:00	so	A
3 Scene 3	00m 04s 960	00:00:00	so	A
4 Scene 4	00m 00s 600	00:00:00	so	A
5 Scene 5	00m 12s 000	00:00:00	so	A
6 Scene 1	00m 02s 000	00:04:000	so	B
7 Scene 2	00m 00s 120	00:00:000	so	B
8 Scene 3	00m 04s 960	00:00:000	so	B
9 Scene 1	00m 02s 000	00:05:000	so	C

Saving to SD Card in PIXXEM software

Only the timeline can be saved in stand alone. You need to add the Stand Alone Line to create scenes. Scenes are called SA Block it will play a loop of the timeline corresponding to the block size.



In the In / Out Config tab, choose the starting universe and the ending universe (for example, from universe 1 to 8 for the first 8 universes). You can set triggers in "Triggers" and "Time" tab. Then click on the Save in Memory button and select Art-Net Save on External SD Card.

